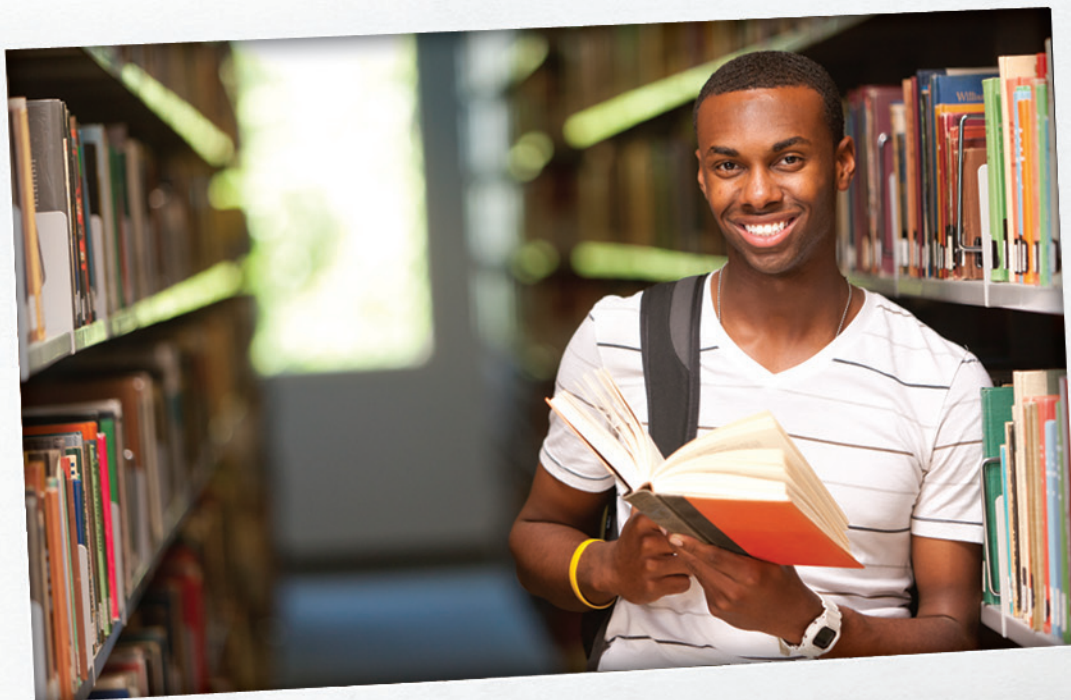


COURSES AND CREDIT HOURS



Texas Wesleyan
UNIVERSITY



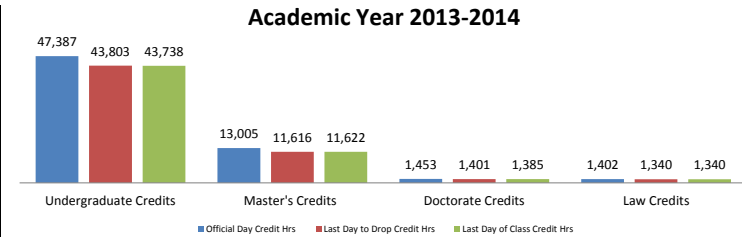
Total Credit Hour Production

Data shown includes all credit hours produced for the academic year. Summer, Fall, and Spring terms combined

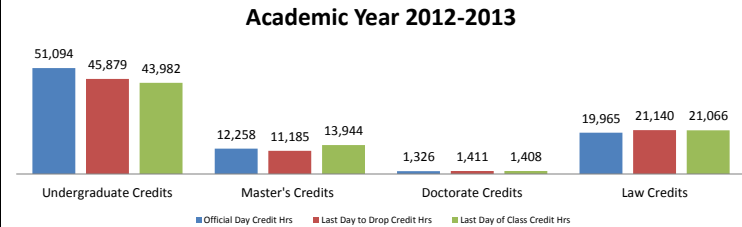
Academic Level of class credit detailed

Reported on Official 12th day of class, last day to drop a class and last day of classes for each term

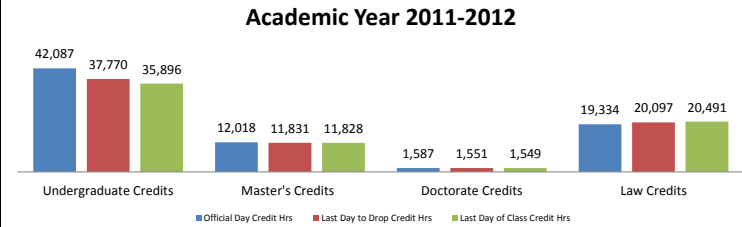
2013-2014							
Summer/Fall/Spring	Official Day Credit Hrs	Last Day to Drop Credit Hrs	loss/gain from official	% change	Last Day of Class Credit Hrs	loss/gain from official	total % change
Undergraduate Credits	47,387	43,803	(3,584)	-8%	43,738	(3,649)	-8%
Master's Credits	13,005	11,616	(1,389)	-11%	11,622	(1,383)	-11%
Doctorate Credits	1,453	1,401	(52)	-4%	1,385	(68)	-5%
Law Credits	1,402	1,340	(62)	-4%	1,340	(62)	-4%
Total Credits	63,247	58,160	(5,087)	-8%	58,085	(5,162)	-8%



2012-2013							
Summer/Fall/Spring	Official Day Credit Hrs	Last Day to Drop Credit Hrs	loss/gain from official	% change	Last Day of Class Credit Hrs	loss/gain from official	total % change
Undergraduate Credits	51,094	45,879	(5,215)	-10%	43,982	(7,112)	-14%
Master's Credits	12,258	11,185	(1,073)	-9%	13,944	1,686	14%
Doctorate Credits	1,326	1,411	85	6%	1,408	82	6%
Law Credits	19,965	21,140	1,175	6%	21,066	1,101	6%
Total Credits	84,643	79,615	(5,028)	-6%	80,400	(4,243)	-5%



2011-2012							
Summer/Fall/Spring	Official Day Credit Hrs	Last Day to Drop Credit Hrs	loss/gain from official	% change	Last Day of Class Credit Hrs	loss/gain from official	total % change
Undergraduate Credits	42,087	37,770	(4,317)	-10%	35,896	(6,191)	-15%
Master's Credits	12,018	11,831	(187)	-2%	11,828	(190)	-2%
Doctorate Credits	1,587	1,551	(36)	-2%	1,549	(38)	-2%
Law Credits	19,334	20,097	763	4%	20,491	1,157	6%
Total Credits	75,026	71,533	(3,493)	-5%	71,943	(3,083)	-4%

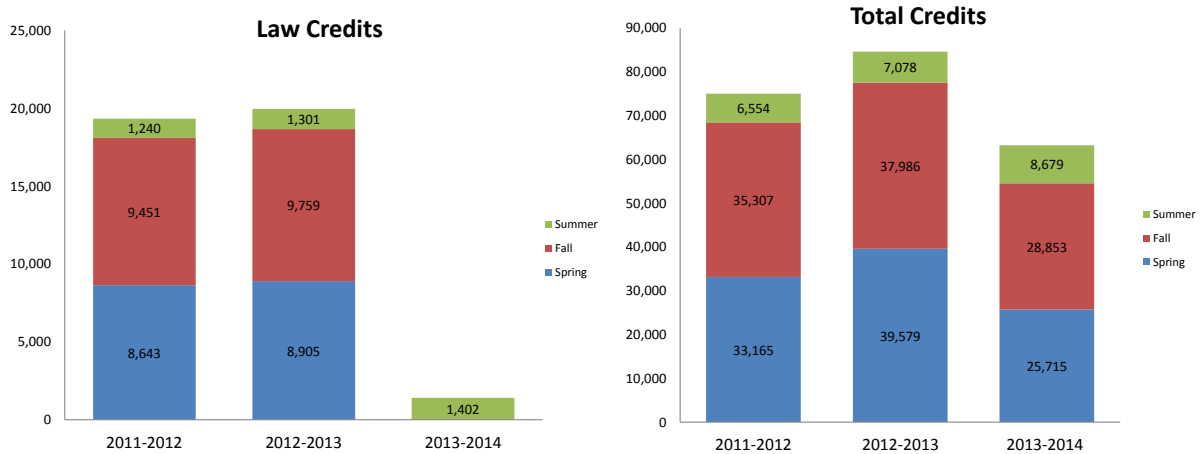
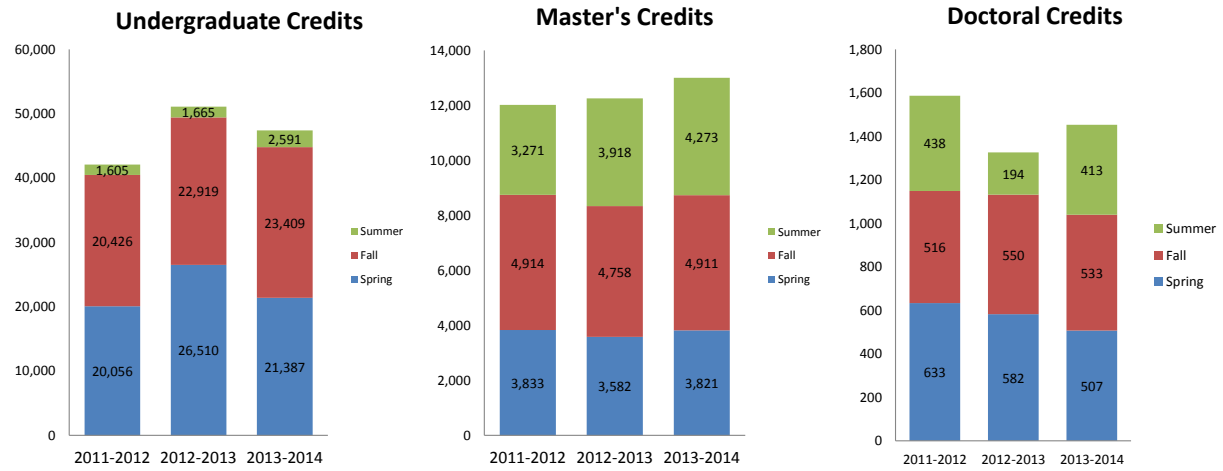


Credit Hours by Academic Level, Academic Year and Term

Summer, Fall, Spring

* Official class section data. Includes all academic levels and all active classes with credit. Data derived from course section information in Datatel

Academic Level	2011-2012				2012-2013				2013-2014			
	Summer	Fall	Spring	Total	Summer	Fall	Spring	Total	Summer	Fall	Spring	Total
Undergraduate	1,605	20,426	20,056	42,087	1,665	22,919	26,510	51,094	2,591	23,409	21,387	47,387
Master's	3,271	4,914	3,833	12,018	3,918	4,758	3,582	12,258	4,273	4,911	3,821	13,005
Doctorate*	438	516	633	1,587	194	550	582	1,326	413	533	507	1,453
Law	1,240	9,451	8,643	19,334	1,301	9,759	8,905	19,965	1,402	0	0	1,402
Total	6,554	35,307	33,165	75,026	7,078	37,986	39,579	84,643	8,679	28,853	25,715	63,247

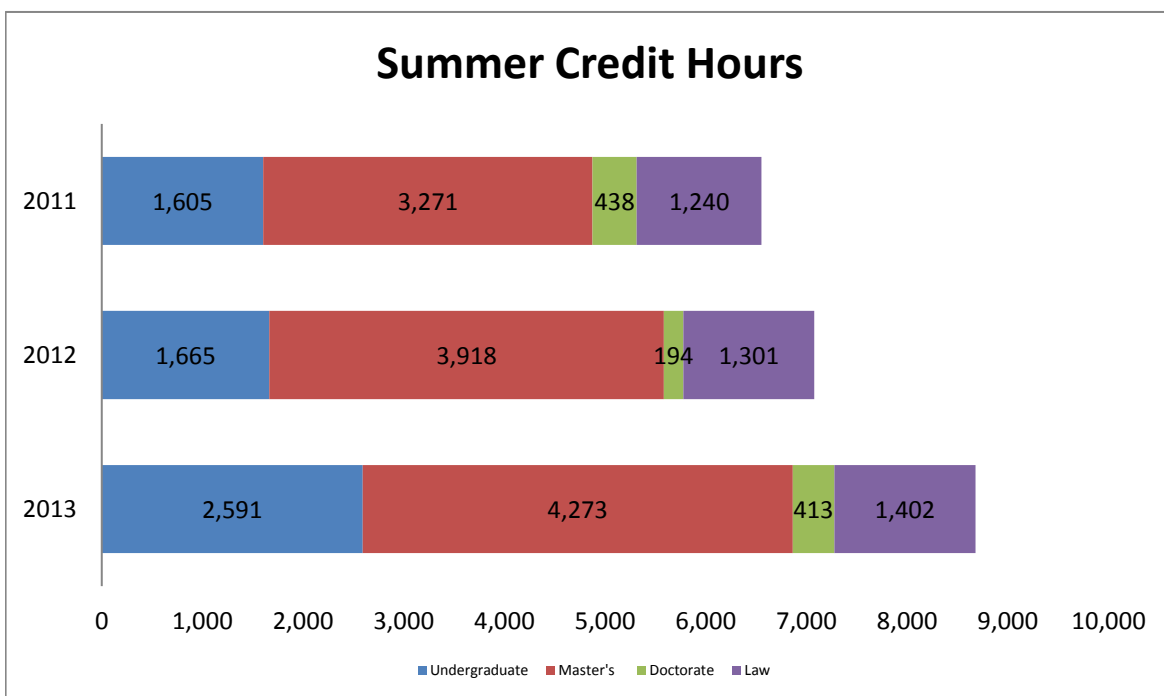


Credit Hour Production by Academic Level Summer

Academic Level	2011	2012	2013
Semester Undergraduate Total	1,605	1,665	2,591
Semester Master's Total	3,271	3,918	4,273
Semester Doctorate Total	438	194	413
Semester Law Total	1,240	1,301	1,402
Grand Total	6,554	7,078	8,679

**Data includes all active classes with credit each term.
Also includes all class academic levels.*

Credit hour data derived from course sections in Datatel



Credit Hour Production by School, Academic Level and Subject - Summer

School of Business	2011	2012	2013
Undergraduate			
Accounting	9	21	0
Business Administration	48	39	120
Computer Information	30	0	0
Economics	0	0	0
Finance	0	0	0
Management	168	111	129
Management Information	0	0	0
Marketing	3	9	69
Master's			
Business Administration	69	24	27
Doctorate			
Business	66	0	0
Total Undergrad			
	258	180	318
Total Master			
	69	24	27
Total Doc			
	66	0	0
Cumulative Total			
	393	204	345

Credit Hour Production by School, Academic Level and Subject - Summer

School of Education	2011	2012	2013
Undergraduate			
Athletic Training	6	279	9
Education	342	0	115
Exercise Science	3	0	9
Kinesiology	1	0	0
Reading	239	220	226
Master's			
Education	150	183	228
Counseling	663	834	837
Natural Science	0	99	0
Reading	138	81	141
Doctorate			
Education	240	123	213
Total Undergrad			
	591	499	359
Total Master			
	951	1,197	1,206
Total Doc			
	240	123	213
Cumulative Total			
	1,782	1,819	1,778

Credit Hour Production by School, Academic Level and Subject - Summer

School of Arts and Letters	2011	2012	2013
Undergraduate			
Art	0	0	
Fine Arts	0	39	6
Humanities	72	51	72
Language and Literature	117	144	561
Mass Communication	27	33	15
Music	0	1	
Other Languages and Literature	0	66	36
Philosophy and Religion	51	78	138
Speech	0	48	195
Theatre Arts	0	0	
Master's			
English	0	0	
Total Undergrad	267	460	1,023
Total Master	0	0	0
Cumulative Total	267	460	1,023

Credit Hour Production by School, Academic Level and Subject - Summer

School of Natural and Social Sciences	2011	2012	2013
Undergraduate			
Biology	0	0	0
Chemistry	0	16	20
Computer Science	3	3	30
Criminal Justice	42	6	63
History	3	3	6
Geography	0	0	0
International Studies	0	0	0
Legal Studies	72	42	18
Mathematics	138	105	597
Natural Science	0	56	0
Physics and Geology	0	0	0
Political Science	69	84	75
Preprofessional Program	0	0	0
Psychology	126	99	37
Sociology	36	13	45
Master's			
Natural Science	99	99	0
Math	21	0	6
Total Undergrad	489	427	891
Total Master	120	99	6
Cumulative Total	609	526	897

Credit Hour Production by School, Academic Level and Subject - Summer

School of Nurse Anesthesia	2011	2012	2013
Health Science Master	2,131	2,697	3,034
Health Science Doctorate	132	71	200

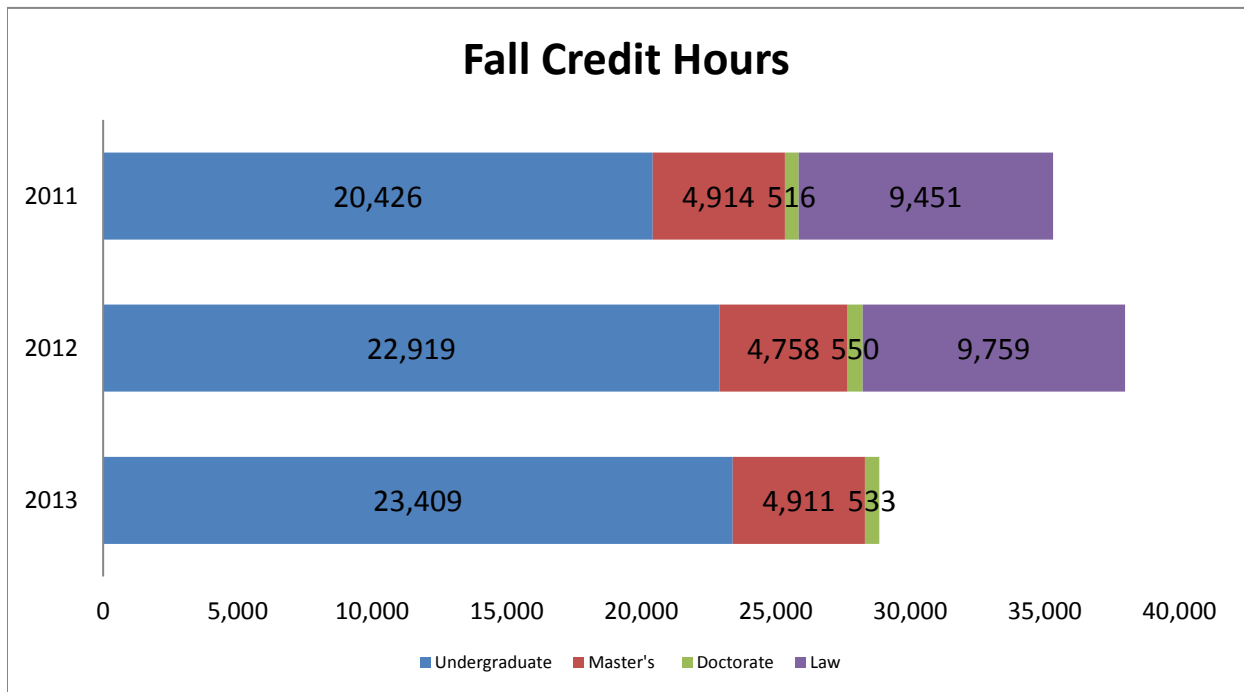
School of Law	2011	2012	2013
Law	1,240	1,301	1,402

Credit Hour Production by Academic Level Fall

Academic Level	2011	2012	2013
Semester Undergraduate Total	20,426	22,919	23,409
Semester Master's Total	4,914	4,758	4,911
Semester Doctorate Total	516	550	533
Semester Law Total	9,451	9,759	0
Grand Total	35,307	37,986	28,853

**Data includes all active classes with credit each term.
Also includes all class academic levels.*

Credit hour data derived from course sections in Datatel



Credit Hour Production by School, Academic Level and Subject - Fall

School of Business	2011	2012	2013
Undergraduate			
Accounting	579	716	681
Business Administration	813	1,083	1,407
Computer Information	15	0	0
Economics	255	216	402
Finance	450	369	405
Management	585	717	771
Management Information	117	141	201
Marketing	399	393	549
Master's			
Business Administration	235	250	313
Doctorate			
Business	71	122	120
<hr/>			
Total Undergrad	3,213	3,635	4,416
Total Master	235	250	313
Total Doctorate	71	122	120
Cumulative Total	3,519	4,007	4,849

Credit Hour Production by School, Academic Level and Subject - Fall

School of Education	2011	2012	2013
Undergraduate			
Athletic Training	103	143	149
Education	1,851	1,331	917
Exercise Science	1,121	1,155	1,102
Kinesiology	0	0	0
Reading	331	674	462
Master's			
Education	231	288	297
Counseling	813	900	918
Reading	27	39	39
Doctorate			
Education	225	216	225
<hr/>			
Total Undergrad	3,406	3,303	2,630
Total Master	1,071	1,227	1,254
Total Doc	225	216	225
Cumulative Total	4,702	4,746	4,109

Credit Hour Production by School, Academic Level and Subject - Fall

School of Arts and Letters	2011	2012	2013
Undergraduate			
Art	96	87	78
Fine Arts	234	501	495
Humanities	441	411	516
Language and Literature	2,148	2,710	2,814
Mass Communication	388	516	418
Music	519	462	330
Foreign Language	360	366	315
Philosophy and Religion	1340	1527	1556
Speech	138	210	483
Theatre Arts	593	536	449
Master's			
English	0	0	0
Total Undergrad	6,257	7,326	7,454
Total Master	0	0	0
Cumulative Total	6,257	7,326	7,454

Credit Hour Production by School, Academic Level and Subject - Fall

School of Natural and Social Sciences	2011	2012	2013
Undergraduate			
Biology	498	743	569
Chemistry	336	339	376
Computer Science	135	174	321
Criminal Justice	873	585	735
History	1,091	1,347	1,047
Geography	60	39	93
International Studies	0	24	144
Legal Studies	252	237	258
Mathematics	1,170	1,365	1,956
Natural Science	482	620	632
Physics and Geology	126	116	104
Political Science	528	438	459
Preprofessional Program	46	68	29
Psychology	1,170	1,190	1,113
Social Science	0	0	0
Sociology	531	740	693
Master's			
Natural Science	105	0	33
Math	9	9	3
Total Undergrad	7,298	8,025	8,529
Total Master	114	9	36
Cumulative Total	7,412	8,034	8,565

Credit Hour Production by School, Academic Level and Subject - Fall

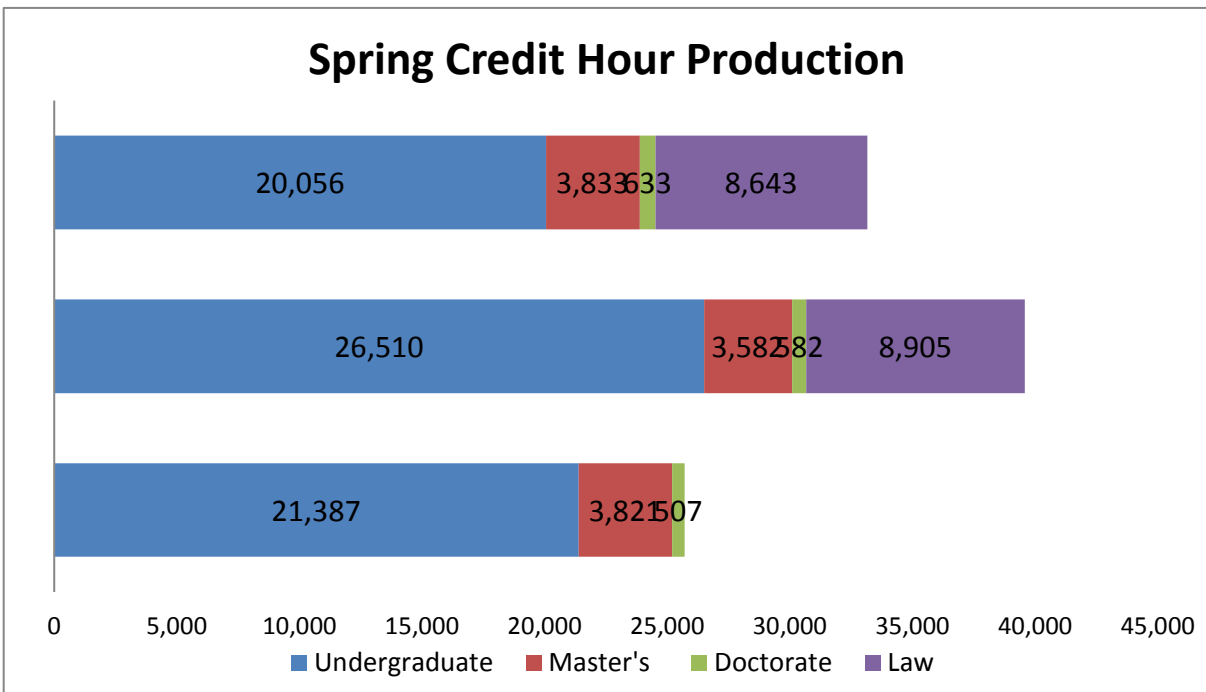
School of Nurse Anesthesia	2011	2012	2013
Health Science Master's	3,494	3,272	3,308
Health Science Doctorate	220	212	188
School of Law	2011	2012	2013
Law	9,451	9,759	0
General University	2011	2012	2013
Undergraduate			
US Airforce/Leadership	0	0	3
Freshman Success	177	498	301
Military Science	31	14	14
Wesleyan Scholars	44	118	44
Women's Studies	0	0	0
Total Undergrad	252	630	362

Credit Hour Production by Academic Level Spring

Academic Level	2012	2013	2014
Semester Undergraduate Total	20,056	26,510	21,387
Semester Master's Total	3,833	3,582	3,821
Semester Doctorate Total	633	582	507
Semester Law Total	8,643	8,905	0
Grand Total	33,165	39,579	25,715

**Data includes all active classes with credit each term.
Also includes all class academic levels.*

Credit hour data derived from course sections in Datatel



Credit Hour Production by School, Academic Level and Subject - Spring

School of Business	2012	2013	2014
Undergraduate			
Accounting	363	426	645
Business Administration	855	882	1,287
Computer Information	3	0	0
Economics	225	309	366
Finance	372	405	387
Management	789	834	789
Management Information	174	141	174
Marketing	393	522	438
Master's			
Business Administration	231	270	249
Doctorate			
Finance	75	66	0
Management	15	42	27
Total Undergrad	3,174	3,519	4,086
Total Master	231	270	249
Total Doc	90	108	27
Cumulative Total	3,495	3,897	4,362

Credit Hour Production by School, Academic Level and Subject - Spring

School of Education	2012	2013	2014
Undergraduate			
Athletic Training	194	195	234
Education	1,600	1,329	842
Exercise Science	964	827	953
Kinesiology	0	0	0
Reading	281	182	176
Master's			
Education	267	267	318
Counseling	924	828	897
Reading	3	24	27
Doctorate			
Education	237	219	186
<hr/>			
Total Undergrad	3,039	2,533	2,205
Total Master	1,194	1,119	1,242
Total Doc	237	219	186
Cumulative Total	4,470	3,871	3,633

Credit Hour Production by School, Academic Level and Subject - Spring

School of Arts and Letters	2012	2013	2014
Undergraduate			
Art	93	100	12
Fine Arts	321	540	699
Foreign Language	342	300	303
Humanities	639	489	558
Language and Literature	2,146	2,360	2,133
Mass Communication	417	558	362
Music	594	455	242
Philosophy and Religion	1,235	1,746	1,413
Speech	237	462	744
Theatre Arts	504	479	523
Master's			
English	15	0	0
Total Undergrad	6,528	7,489	6,989
Total Master	15	0	0
Cumulative Total	6,543	7,489	6,989

Credit Hour Production by School, Academic Level and Subject - Spring

School of Natural and Social Sciences	2012	2013	2014
Undergraduate			
Biology	560	618	504
Chemistry	266	370	329
Computer Science	111	258	372
Criminal Justice	759	552	666
History	1,107	1,068	1,008
Geography	90	84	102
International Studies	21	48	0
Legal Studies	213	219	192
Mathematics	1,162	814	864
Natural Science	484	804	576
Physics and Geology	165	92	72
Political Science	468	468	513
Psychology	1,291	1,095	1,176
Social Science	0	0	0
Sociology	498	694	706
Master's			
Natural Science	0	0	0
Math	9	9	6
Total Undergrad	7,195	7,184	7,080
Total Master	9	9	6
Cumulative Total	7,204	7,193	7,086

Credit Hour Production by School, Academic Level and Subject - Spring

School of Nurse Anesthesia	2012	2013	2014
Health Science Master's	2384	2184	2324
Health Science Doctorate	306	255	294

School of Law	2012	2013	2014
Law	8,643	8,905	0

General University	2012	2013	2014
Undergraduate			
Freshman Success	31	381	123
International Studies	0	3	30
Language and Literature	0	1,704	342
Leadership	0	0	4
Mathematics	0	1,995	585
Military Science	19	12	6
Preprofessional Program	18	12	16
Reading	0	1,590	198
Special Topics	0	0	0
Wesleyan Scholars	52	88	36
Women's Studies	0	0	0
Total Undergrad	120	5,785	1,340

**Total Credit Hours Summer '13- Spring '14
Official 12th Day**

SUBJECTS	Summer <i>Official</i>	Fall <i>Official</i>	Spring <i>Official</i>	Total Credits <i>Official</i>
Business - Undergraduate				
ACC	0	681	654	1,335
BUA	120	1,407	1,287	2,814
CIS	0	0	0	0
ECO	0	402	366	768
FIN	0	405	387	792
IBA	0	0	0	0
MGT	129	771	789	1,689
MIS	0	201	174	375
MKT	69	549	438	1,056
PUA	0	0	0	0
Business - Graduate				
ACC	0	61	21	82
BUA	0	168	51	219
CIS	0	0	0	0
ECO	0	0	27	27
FIN	0	42	15	57
IBA	0	0	0	0
MGT	27	9	72	108
MIS	0	0	63	63
MKT	0	33	0	33
PUA	0	0	0	0
SHM	0	0	0	0
Business - Doctorate				
ACC	0	18	0	18
FIN	0	0	0	0
MGT	0	102	27	129
Education-Undergraduate				
ATR	9	149	234	392
EDU	115	917	842	1,874
EXS	9	1,102	953	2,064
RDG	226	141	176	543
Kinesiology				
KIN	0	0	0	0
Graduate Education				
EDU	228	297	318	843
RDG	141	39	27	207
Doctorate Education				
EDU	213	225	186	624
Graduate Counseling				
COU	837	918	897	2,652
Music				
MAP	0	143	131	274
MIT	0	4	6	10
MUS	0	330	235	565
Theater				
TAP	0	62	74	136
THA	0	387	318	705
Biology				
BIO	0	569	504	1,073
Chemistry				
CHE	20	376	329	725
Physics/Geology				
GEO	0	56	60	116
PHY	0	48	12	60
Math				
MAT (UG)	597	1,956	1,449	4,002
MAT (GR)	6	3	6	15
Computer Science				
CSC	30	321	372	723
Philosophy & Religion				
PHI	24	273	321	618
REL	114	1,190	1,023	2,327
BIB	0	0	0	0
Foreign Language				
SPN	36	258	249	543
FRE	0	3	3	6
GER	0	12	6	18
POR	0	6	6	12

**Total Credit Hours Summer '13- Spring '14
Official 12th Day**

SUBJECTS	Summer <i>Official</i>	Fall <i>Official</i>	Spring <i>Official</i>	Total Credits <i>Official</i>
Language & Literature				
ENG (UG)	561	2,814	2,310	5,685
ENG (GR)	0	0	0	0
SPC	195	483	744	1,422
Psychology				
PSY	37	1,113	1,176	2,326
History				
HIS	6	1,047	1,008	2,061
Humanities				
HUM	72	516	519	1,107
ART	0	78	12	90
Political Science				
POL	75	459	513	1,047
Sociology & Criminal Justice				
CRJ	63	735	666	1,464
SOC	45	693	706	1,444
GPNA				
HSC	3,034	3,308	2,324	8,666
DPNA				
HSC	200	188	294	682
Mass Communication				
MCO	15	418	362	795
Pre-Professional				
3PR	0	29	16	45
Law				
LAW	1,402	0	0	1,402
AER	0	3	4	7
ASE	0	301	123	424
FAR	6	495	699	1,200
GEG	0	93	102	195
GST	0	0	0	0
IST	0	144	30	174
MSC	0	14	6	20
NSC (GR)	0	33	0	33
NSC (UG)	0	632	576	1,208
PLS	18	258	192	468
RDG	0	321	198	519
SSC	0	0	0	0
WSP	0	44	36	80
WST	0	0	0	0
Total Credit Hours As Of Official, 12th Day				
	8,679	28,853	25,715	63,247
Undergraduate Credits	2,591	23,409	21,387	47,387
Graduate Credits	4,273	4,911	3,821	13,005
Doctorate Credits	413	533	507	1,453
Law Credits	1,402	0	0	1,402

Comparative Enrollment by School & Class Subject Summer 2013

Summer 2013					
School/Subject/Class Level	# of Classes	# of Students	Avg Class Enrollment	Credit Hours	Avg Credit Hours Per Section

University Total

Semester Undergraduate Total	87	814	9.4	2,467	28.4
Semester Master's Total	39	369	9.5	1,107	28.4
Semester Doctoral Total	8	34	4.3	102	12.8
Cumulative for Term	134	1,217	9.1	3,676	27.4

**Based on 3-4 Hour Lecture Classes for the Fall Semester
Excludes Nurse Anesthesia, true labs, practicums, internships,
independent study and conference classes*



Comparative Enrollment by School & Class Subject Summer 2013

Summer 2013					
School/Subject/Class Level	# of Classes	# of Students	Avg Class Enrollment	Credit Hours	Avg Credit Hours Per Section
School of Business					
Business Administration	3	40	13.3	120	40.0
freshman/sophomore	2	35	17.5	105	52.5
junior/senior	1	5	5.0	15	15.0
master's	0	0	0.0	0	0.0
Management	5	50	10.0	150	30.0
freshman/sophomore	0	0	0.0	0	0.0
junior/senior	4	41	10.3	123	30.8
master's	1	9	9.0	27	27.0
doctoral	0	0	0.0	0	0.0
Marketing	2	23	11.5	69	34.5
freshman/sophomore	0	0	0.0	0	0.0
junior/senior	2	23	11.5	69	34.5
master's	0	0	0.0	0	0.0
Total Undergrad	9	104	11.6	312	34.7
Total Master	1	9	9.0	27	27.0
Total Doctoral	0	0	0.0	0	0.0
Cumulative Total	10	113	11.3	339	33.9

* Based on 3-4 Hour Lecture Classes

Excludes Nurse Anesthesia, true labs, practicums, internships, independent study and conference classes

Comparative Enrollment by School & Class Subject Summer 2013

Summer 2013					
School/Subject/Class Level	# of Classes	# of Students	Avg Class Enrollment	Credit Hours	Avg Credit Hours Per Section
School of Education					
Education	23	128	5.6	384	16.7
freshman/sophomore	0	0	0.0	0	0.0
junior/senior	5	23	4.6	69	13.8
master's	10	71	7.1	213	21.3
doctoral	8	34	4.3	102	12.8
Exercise and Sports Studies	2	6	3.0	18	9.0
freshman/sophomore	1	3	0.0	9	0.0
junior/senior	1	3	0.0	9	0.0
Counseling	21	242	11.5	726	34.6
master's	21	242	11.5	726	34.6
Reading	10	83	8.3	274	27.4
freshman/sophomore	0	0	0.0	0	0.0
junior/senior	5	38	7.6	139	27.8
master's	5	45	9.0	135	27.0
Total Undergrad	12	67	5.6	226	18.8
Total Master	36	358	9.9	1,074	29.8
Total Doctoral	8	34	4.3	102	12.8
Cumulative Total	56	459	8.2	1,402	25.0

* Based on 3-4 Hour Lecture Classes

Excludes Nurse Anesthesia, true labs, practicums, internships, independent study and conference classes

Comparative Enrollment by School & Class Subject Summer 2013

Summer 2013					
School/Subject/Class Level	# of Classes	# of Students	Avg Class Enrollment	Credit Hours	Avg Credit Hours Per Section
School of Arts and Letters					
Fine Arts	1	2	2.0	6	6.0
freshman/sophomore	1	2	2.0	6	6.0
junior/senior	0	0	0.0	0	0.0
Foreign Languages	6	12	2.0	36	6.0
freshman/sophomore	4	10	2.5	30	7.5
junior/senior	2	2	1.0	6	3.0
Humanities	3	24	8.0	72	24.0
freshman/sophomore	3	24	8.0	72	24.0
junior/senior	0	0	0.0	0	0.0
Language and Literature	4	35	8.8	105	26.3
freshman/sophomore	2	16	8.0	48	24.0
junior/senior	2	19	9.5	57	28.5
Mass Communication	2	4	2.0	12	6.0
freshman/sophomore	2	4	2.0	12	6.0
junior/senior	0	0	0.0	0	0.0
Philosophy and Religion	6	46	7.7	138	23.0
freshman/sophomore	6	46	7.7	138	23.0
junior/senior	0	0	0.0	0	0.0
Speech	4	65	16.3	195	48.8
freshman/sophomore	4	65	16.3	195	48.8
junior/senior	0	0	0.0	0	0.0
Total Undergrad	26	188	7.2	564	21.7

* Based on 3-4 Hour Lecture Classes

Excludes Nurse Anesthesia, true labs, practicums, internships, independent study and conference classes

Comparative Enrollment by School & Class Subject Summer 2013

Summer 2013					
School/Subject/Class Level	# of Classes	# of Students	Avg Class Enrollment	Credit Hours	Avg Credit Hours Per Section
School of Natural and Social Sciences					
Chemistry	1	5	5.0	15	15.0
freshman/sophomore	1	5	5.0	15	15.0
junior/senior	0	0	0.0	0	0.0
master's	0	0	0.0	0	0.0
Computer Science	2	10	5.0	30	15.0
freshman/sophomore	2	10	5.0	30	15.0
junior/senior	0	0	0.0	0	0.0
Criminal Justice	2	14	7.0	42	21.0
freshman/sophomore	0	0	0.0	0	0.0
junior/senior	2	14	7.0	42	21.0
Legal Studies	1	6	6.0	18	18.0
freshman/sophomore	0	0	0.0	0	0.0
junior/senior	1	6	6.0	18	18.0
Mathematics	5	27	5.4	81	16.2
freshman/sophomore	2	20	10.0	60	30.0
junior/senior	1	5	5.0	15	15.0
master's	2	2	1.0	6	3.0
Political Science	2	16	8.0	48	24.0
freshman/sophomore	0	0	0.0	0	0.0
junior/senior	2	16	8.0	48	24.0
Psychology	2	11	5.5	33	16.5
freshman/sophomore	1	5	0.0	15	0.0
junior/senior	1	6	6.0	18	18.0
Sociology	2	15	7.5	45	22.5
freshman/sophomore	2	15	0.0	45	0.0
junior/senior	0	0	0.0	0	0.0
Total Undergrad	15	102	6.8	306	20.4
Total Master	2	2	1.0	6	3.0
Cumulative Total	17	104	6.1	312	18.4

* Based on 3-4 Hour Lecture Classes

Excludes Nurse Anesthesia, true labs, practicums, internships, independent study and conference classes

Comparative Enrollment by School & Class Subject Summer 2013

Summer 2013					
School/Subject/Class Level	# of Classes	# of Students	Avg Class Enrollment	Credit Hours	Avg Credit Hours Per Section
University General					
Mathmatics	11	174	15.8	522	47.5
freshman/sophomore	11	174	15.8	522	47.5
junior/senior	0	0	0.0	0	0.0
Language & Literature	11	150	0.0	450	0.0
freshman/sophomore	11	150	0.0	450	0.0
junior/senior	0	0	0.0	0	0.0
Reading	3	29	0.0	87	0.0
freshman/sophomore	3	29	0.0	87	0.0
junior/senior	0	0	0.0	0	0.0
Total Undergrad	25	353	14.1	1,059	42.4

* Based on 3-4 Hour Lecture Classes

Excludes Nurse Anesthesia, true labs, practicums, internships, independent study and conference classes

Enrollment by School & Class Subject Fall 2013

Fall 2013					
* Based on 3-4 Hour Lecture Classes-Excludes Nurse Anesthesia, true labs, practicums, internships, independent study and conference classes					
School/Subject/Class Level	# of Classes	# of Students	Avg Class		Avg Credit Hours
			Enrollment	Credit Hours	Per Section
University Total					
Semester Undergraduate Total	500	7,544	15.1	23,055	46.11
Semester Master's Total	45	491	10.9	1,475	32.78
Semester Doctoral Total	12	60	5.0	180	15.00
Cumulative for Term	557	8,095	14.5	24,710	44.36



Enrollment by School & Class Subject Fall 2013

Fall 2013					
* Based on 3-4 Hour Lecture Classes-Excludes Nurse Anesthesia, true labs, practicums, internships, independent study and conference classes					
School/Subject/Class Level	# of Classes	# of Students	Avg Class		Avg Credit Hours
			Enrollment	Credit Hours	Per Section
School of Business					
Accounting	20	268	13.4	812	40.60
freshman/sophomore	4	116	29.0	348	87.00
junior/senior	11	131	11.9	399	36.27
master's	5	21	4.2	65	13.00
Business Administration	18	544	30.2	1,632	90.67
freshman/sophomore	9	310	34.4	930	103.33
junior/senior	6	180	30.0	540	90.00
master's	3	54	18.0	162	54.00
Economics	4	134	33.5	402	100.50
freshman/sophomore	4	134	33.5	402	100.50
junior/senior	0	0	0.0	0	0.00
master's	0	0	0.0	0	0.00
Finance	8	143	17.9	429	53.63
freshman/sophomore	2	63	31.5	189	94.50
junior/senior	5	67	13.4	201	40.20
master's	1	13	13.0	39	39.00
Management	12	256	21.3	768	64.00
freshman/sophomore	0	0	0.0	0	0.00
junior/senior	11	254	23.1	762	69.27
master's	1	2	2.0	6	6.00
Management & Computer Information					
Systems	2	67	33.5	201	100.50
freshman/sophomore	0	0	0.0	0	0.00
junior/senior	2	67	33.5	201	100.50
master's	0	0	0.0	0	0.00
Marketing	11	204	18.5	612	55.64
freshman/sophomore	0	0	0.0	0	0.00
junior/senior	10	193	19.3	579	57.90
master's	1	11	11.0	33	33.00
Total Undergrad	64	1,515	23.7	4,551	71.11
Total Master	11	101	9.2	305	27.73
Total Doctoral	0	0	0.0	0	0.00
Cumulative Total	75	1,616	21.5	4,856	64.75

Enrollment by School & Class Subject Fall 2013

Fall 2013					
* Based on 3-4 Hour Lecture Classes-Excludes Nurse Anesthesia, true labs, practicums, internships, independent study and conference classes					
School/Subject/Class Level	# of Classes	# of Students	Avg Class		Avg Credit Hours
			Enrollment	Credit Hours	Per Section
School of Education					
Athletic Training	5	42	8.4	126	25.20
freshman/sophomore	1	24	24.0	72	72.00
junior/senior	4	18	4.5	54	13.50
Education	61	648	10.6	1,973	32.34
freshman/sophomore	3	38	12.7	114	38.00
junior/senior	15	181	12.1	572	38.13
master of counseling	19	271	14.3	813	42.79
master of education	12	98	8.2	294	24.50
doctoral education	12	60	5.0	180	15.00
Exercise and Sports Studies	16	188	11.8	564	35.25
freshman/sophomore	4	69	17.3	207	51.75
junior/senior	12	119	9.9	357	29.75
master's	0	0	0.0	0	0.00
Natural Science	1	11	11.0	33	33.00
master's	1	11	11.0	33	33.00
Reading	6	44	7.3	150	25.00
freshman/sophomore	0	0	0.0	0	0.00
junior/senior	5	35	7.0	123	24.60
master's	1	9	9.0	27	27.00
Total Undergrad	44	484	11.0	1,499	34.07
Total Master	33	389	11.8	1,167	35.36
Total Doc	12	60	5.0	180	15.00
Cumulative Total	89	933	10.5	2,846	31.98

Enrollment by School & Class Subject Fall 2013

Fall 2013					
* Based on 3-4 Hour Lecture Classes-Excludes Nurse Anesthesia, true labs, practicums, internships, independent study and conference classes					
School/Subject/Class Level	# of Classes	# of Students	Avg Class		Avg Credit Hours
			Enrollment	Credit Hours	Per Section
School of Arts and Letters					
Art	5	26	5.2	78	15.60
freshman/sophomore	5	26	5.2	78	15.60
junior/senior	0	0	0.0	0	0.00
Fine Arts	13	165	12.7	495	38.08
freshman/sophomore	13	165	12.7	495	38.08
junior/senior	0	0	0.0	0	0.00
Foreign Language	15	105	7.0	315	21.00
freshman/sophomore	12	72	6.0	216	18.00
junior/senior	3	33	11.0	99	33.00
Humanities	10	172	17.2	516	51.60
freshman/sophomore	10	172	17.2	516	51.60
junior/senior	0	0	0.0	0	0.00
Language and Literature	65	901	13.9	2,703	41.58
freshman/sophomore	52	756	14.5	2,268	43.62
junior/senior	13	145	11.2	435	33.46
Mass Communication	14	124	8.9	384	27.43
freshman/sophomore	7	52	7.4	168	24.00
junior/senior	7	72	10.3	216	30.86
Music	8	53	6.6	175	21.88
freshman/sophomore	4	33	8.3	99	24.75
junior/senior	4	20	5.0	76	19.00
Philosophy and Religion	35	512	14.6	1,536	43.89
freshman/sophomore	31	463	14.9	1,389	44.81
junior/senior	4	49	12.3	147	36.75
Speech	9	161	17.9	483	53.67
freshman/sophomore	9	161	17.9	483	53.67
junior/senior	0	0	0.0	0	0.00
Theatre Arts	12	120	10.0	360	30.00
freshman/sophomore	4	49	12.3	147	36.75
junior/senior	8	71	8.9	213	26.63
Total Undergrad	186	2,339	12.6	7,045	37.88

Enrollment by School & Class Subject Fall 2013

Fall 2013					
* Based on 3-4 Hour Lecture Classes-Excludes Nurse Anesthesia, true labs, practicums, internships, independent study and conference classes					
School/Subject/Class Level	# of Classes	# of		Avg Credit Hours	
		Students	Enrollment	Credit Hours	Per Section
School of Natural and Social Sciences					
Biology	18	176	9.8	567	31.50
freshman/sophomore	6	127	21.2	381	63.50
junior/senior	12	49	4.1	186	15.50
Chemistry	7	96	13.7	289	41.29
freshman/sophomore	3	72	24.0	216	72.00
junior/senior	4	24	6.0	73	18.25
Computer Science	11	105	9.5	315	28.64
freshman/sophomore	8	99	12.4	297	37.13
junior/senior	3	6	2.0	18	6.00
Criminal Justice	11	237	21.5	711	64.64
freshman/sophomore	4	99	24.8	297	74.25
junior/senior	7	138	19.7	414	59.14
Geography	1	31	31.0	93	93.00
freshman/sophomore	1	31	31.0	93	93.00
junior/senior	0	0	0.0	0	0.00
History	28	394	14.1	1,182	42.21
freshman/sophomore	17	267	15.7	801	47.12
junior/senior	11	127	11.5	381	34.64
International Studies	5	76	15.2	228	45.60
freshman/sophomore	5	76	15.2	228	45.60
junior/senior	0	0	0.0	0	0.00
Legal Studies	10	105	10.5	315	31.50
freshman/sophomore	0	0	0.0	0	0.00
junior/senior	10	105	10.5	315	31.50
Mathematics	18	286	15.9	858	47.67
freshman/sophomore	15	260	17.3	780	52.00
junior/senior	2	25	12.5	75	37.50
master's	1	1	1.0	3	3.00
Natural Science	14	258	18.4	1,032	73.71
freshman/sophomore	14	258	18.4	1,032	73.71
junior/senior	0	0	0.0	0	0.00
Physics and Geology	2	26	13.0	104	52.00
freshman/sophomore	2	26	13.0	104	52.00
junior/senior	0	0	0.0	0	0.00
Political Science	16	147	9.2	441	27.56
freshman/sophomore	2	30	15.0	90	45.00
junior/senior	14	117	8.4	351	25.07
Psychology	16	361	22.6	1,101	68.81
freshman/sophomore	7	202	28.9	624	89.14
junior/senior	9	159	17.7	477	53.00
Sociology	11	226	20.5	678	61.64
freshman/sophomore	5	121	24.2	363	72.60
junior/senior	6	105	17.5	315	52.50
Total Undergrad	167	2,523	15.1	7,911	47.37
Total Master	1	1	1.0	3	3.00
Cumulative Total	168	2,524	15.0	7,914	47.11

Enrollment by School & Class Subject Fall 2013

Fall 2013					
* Based on 3-4 Hour Lecture Classes-Excludes Nurse Anesthesia, true labs, practicums, internships, independent study and conference classes					
School/Subject/Class Level	# of Classes	# of Students	Avg Class		Avg Credit Hours
			Enrollment	Credit Hours	Per Section
General University					
Language and Literature	12	196	16.3	588	49.00
freshman/sophomore	12	196	16.3	588	49.00
junior/senior	0	0	0.0	0	0.00
Mathematics	19	379	19.9	1,137	59.84
freshman/sophomore	19	379	19.9	1,137	59.84
junior/senior	0	0	0.0	0	0.00
Pre Professional	1	1	1.0	3	3.00
freshman/sophomore	0	0	0.0	0	0.00
junior/senior	1	1	1.0	3	3.00
Reading	7	107	15.3	321	45.86
freshman/sophomore	7	107	15.3	321	45.86
junior/senior	0	0	0.0	0	0.00
Total Undergrad	39	683	17.5	2,049	52.54

Enrollment in CORE Class Sections Fall 2013

Fall 2013					
School/Subject/Class Level	# of Classes	# of Students	Avg Class Enrollment	Credit Hours	Avg Credit Hours Per Section
School of Business					
Accounting CORE	4	116	29.0	348	87.00
freshman/sophomore	4	116	29.0	348	87.00
junior/senior	0	0	0.0	0	0.00
Business Admin CORE	8	224	28.0	672	84.00
freshman/sophomore	2	44	22.0	132	66.00
junior/senior	6	180	30.0	540	90.00
Economics CORE	1	32	32.0	96	96.00
freshman/sophomore	1	32	32.0	96	96.00
Finance CORE	2	29	14.5	87	43.50
junior/senior	2	29	14.5	87	43.50
Intl Business Admin CORE	0	0	0.0	0	0.00
freshman/sophomore	0	0	0.0	0	0.00
junior/senior	0	0	0.0	0	0.00
Management CORE	3	86	28.7	258	86.00
junior/senior	3	86	28.7	258	86.00
Mgmt Info Systems CORE	2	67	33.5	201	100.50
junior/senior	2	67	33.5	201	100.50
Marketing CORE	3	104	34.7	312	104.00
junior/senior	3	104	34.7	312	104.00
Total	23	658	28.6	1,974	85.83
School of Education					
Education CORE	4	56	14.0	168	42.00
freshman/sophomore	0	0	0.0	0	0.00
junior/senior	0	0	0.0	0	0.00
master's	4	56	14.0	168	42.00
Total	4	56	14.0	168	42.00
Cumulative Total	27	714	26.4	2,142	79.33

Enrollment by Weekend Class Sections Fall 2013

Fall 2013					
School/Subject/Class Level	# of Classes	# of Students	Avg Class Enrollment	Credit Hours	Avg Credit Hours Per Section
School of Arts and Letters					
Language and Literature	0	0	0.0	0	0.00
freshman/sophomore	0	0	0.0	0	0.00
junior/senior	0	0	0.0	0	0.00
Philosophy	0	0	0.0	0	0.00
freshman/sophomore	0	0	0.0	0	0.00
Total	0	0	0.0	0	0.00
School of Education					
Education	9	84	9.3	252	28.00
master of counseling	3	43	14.3	129	43.00
master of education	2	18	9.0	54	27.00
doctoral education	4	23	5.8	69	17.25
master of natural science	0	0	0.0	0	0.00
Exercise Science	0	0	0.0	0	0.00
freshman/sophomore	0	0	0.0	0	0.00
Total	9	84	9.3	252	28.00

Enrollment by Weekend Class Sections (Cont.) Fall 2013

Fall 2013					
School/Subject/Class Level	# of Classes	# of Students	Avg Class Enrollment	Credit Hours	Avg Credit Hours Per Section
School of Natural & Social Sciences					
Criminal Justice	1	20	20.0	60	60.00
freshman/sophomore	1	20	20.0	60	60.00
junior/senior	0	0	0.0	0	0.00
Mathematics	0	0	0.0	0	0.00
master's	0	0	0.0	0	0.00
Natural Science	1	7	7.0	28	28.00
freshman/sophomore	1	7	7.0	28	28.00
Legal Studies	2	32	16.0	96	48.00
junior/senior	2	32	16.0	96	48.00
Political Science	1	2	2.0	6	6.00
junior/senior	1	2	2.0	6	6.00
Psychology	0	0	0.0	0	0.00
junior/senior	0	0	0.0	0	0.00
Sociology	2	18	9.0	54	27.00
freshman/sophomore	1	13	13.0	39	39.00
junior/senior	1	5	5.0	15	15.00
Total	7	79	11.3	244	34.86
Cumulative Total	16	163	10.2	496	31.00

Enrollment by Conference Class Sections Fall 2013

Fall 2013					
School/Subject/Class Level	# of Classes	# of Students	Avg Class Enrollment	Credit Hours	Avg Credit Hours Per Section
School of Arts and Letters					
Foreign Languages	0	0	0.0	0	0.00
freshman/sophomore	0	0	0.0	0	0.00
Humanities	0	0	0.0	0	0.00
freshman/sophomore	0	0	0.0	0	0.00
Language and Literature	1	1	0.0	3	0.00
junior/senior	1	1	0.0	3	0.00
master's	0	0	0.0	0	0.00
Music	0	0	0.0	0	0.00
freshman/sophomore	0	0	0.0	0	0.00
junior/senior	0	0	0.0	0	0.00
Mass Communication	1	1	0.0	3	0.00
junior/senior	1	1	0.0	3	0.00
Philosophy and Religion	2	3	0.0	5	0.00
freshman/sophomore	2	3	0.0	5	0.00
junior/senior	0	0	0.0	0	0.00
Total Undergrad	4	5	1.3	11	2.75
Total Master	0	0	0.0	0	0.00
Total	4	5	1.3	11	2.75
School of Business					
Accounting	0	0	0.0	0	0.00
junior/senior	0	0	0.0	0	0.00
Business	1	2	0.0	6	0.00
master's	1	2	0.0	6	0.00
Finance	0	0	0.0	0	0.00
junior/senior	0	0	0.0	0	0.00
Management	2	2	1.0	6	3.00
junior/senior	1	1	0.0	3	0.00
master's	1	1	1.0	3	3.00
Total Undergrad	1	1	1.0	3	3.00
Total Master	2	3	1.5	9	4.50
Total	3	4	1.3	12	4.00

Enrollment by Conference Class Sections (Cont.) Fall 2013

Fall 2013					
School/Subject/Class Level	# of Classes	# of Students	Avg Class Enrollment	Credit Hours	Avg Credit Hours Per Section
School of Education					
Education	4	4	1.0	12	3.00
junior/senior	0	0	0.0	0	0.00
doctoral education	1	1	1.0	3	3.00
master of counseling	1	1	1.0	3	3.00
master of education	2	2	1.0	6	3.00
Exercise Science	0	0	0.0	0	0.00
junior/senior	0	0	0.0	0	0.00
Kinesiology	0	0	0.0	0	0.00
junior/senior	0	0	0.0	0	0.00
Reading	4	9	2.3	30	7.50
junior/senior	2	5	2.5	18	9.00
master's	2	4	2.0	12	6.00
Total Undergrad	2	5	2.5	18	9.00
Total Master	5	7	1.4	21	4.20
Total Doc	1	1	1.0	3	3.00
Total	8	13	1.6	42	5.25

Enrollment by Conference Class Sections (Cont.) Fall 2013

Fall 2013					
School/Subject/Class Level	# of Classes	# of Students	Avg Class Enrollment	Credit Hours	Avg Credit Hours Per Section
School of Natural and Social Sciences					
Biology	0	0	0.0	0	0.00
freshman/sophomore	0	0	0.0	0	0.00
Chemistry	0	0	0.0	0	0.00
junior/senior	0	0	0.0	0	0.00
Criminal Justice	1	1	1.0	3	3.00
junior/senior	1	1	1.0	3	3.00
Computer Science	2	2	1.0	6	3.00
freshman/sophomore	0	0	0.0	0	0.00
junior/senior	2	2	1.0	6	3.00
History	0	0	0.0	0	0.00
junior/senior	0	0	0.0	0	0.00
Legal Studies	0	0	0.0	0	0.00
junior/senior	0	0	0.0	0	0.00
Mathematics	1	1	1.0	3	3.00
freshman/sophomore	1	1	1.0	3	3.00
junior/senior	0	0	0.0	0	0.00
master's	0	0	0.0	0	0.00
Natural Science	0	0	0.0	0	0.00
freshman/sophomore	0	0	0.0	0	0.00
junior/senior	0	0	0.0	0	0.00
Political Science	2	2	1.0	6	3.00
junior/senior	2	2	1.0	6	3.00
Psychology	1	1	1.0	3	3.00
freshman/sophomore	0	0	0.0	0	0.00
junior/senior	1	1	1.0	3	3.00
Sociology	1	1	1.0	3	3.00
freshman/sophomore	0	0	0.0	0	0.00
junior/senior	1	1	1.0	3	3.00
Total Undergrad	8	8	1.0	24	3.00
Total Master	0	0	0.0	0	0.00
Total	8	8	1.0	24	3.00
Cumulative Total	23	30	1.3	89	3.87

Enrollment by Internship Class Sections Fall 2013

Fall 2013					
School/Subject/Class Level	# of Classes	# of Students	Avg Class Enrollment	Credit Hours	Avg Credit Hours Per Section
School of Arts and Letters					
Language and Literature	1	1	1.0	3	3.00
junior/senior	1	1	1.0	3	3.00
Mass Communication	1	8	8.0	24	24.00
junior/senior	1	8	8.0	24	24.00
Philosophy and Religion	0	0	0.0	0	0.00
freshman/sophomore	0	0	0.0	0	0.00
junior/senior	0	0	0.0	0	0.00
Total	2	9	4.5	27	13.50
School of Business					
Business	1	1	1.0	3	3.00
junior/senior	1	1	1.0	3	3.00
Finance	0	0	0.0	0	0.00
junior/senior	0	0	0.0	0	0.00
Marketing	1	1	1.0	3	3.00
junior/senior	1	1	1.0	3	3.00
Management	2	2	1.0	6	3.00
junior/senior	2	2	1.0	6	3.00
Total	4	4	1.0	12	3.00
School of Education					
Education	7	30	4.3	180	25.71
junior/senior	7	30	4.3	180	25.71
master of counseling	0	0	0.0	0	0.00
master of education	0	0	0.0	0	0.00
Exercise Science	1	2	0.0	6	0.00
junior/senior	1	2	0.0	6	0.00
Total Undergrad	8	32	4.0	186	23.25
Total Master	0	0	0.0	0	0.00
Total	8	32	4.0	186	23.25

Enrollment by Internship Class Sections (Cont.) Fall 2013

Fall 2013					
School/Subject/Class Level	# of Classes	# of Students	Avg Class Enrollment	Credit Hours	Avg Credit Hours Per Section
School of Natural and Social Sciences					
Chemistry	1	2	2.0	4	4.00
junior/senior	1	2	2.0	4	4.00
Computer Science	0	0	0.0	0	0.00
junior/senior	0	0	0.0	0	0.00
Criminal Justice	1	7	7.0	21	21.00
junior/senior	1	7	7.0	21	21.00
History	1	1	1.0	3	3.00
junior/senior	1	1	1.0	3	3.00
Legal Studies	0	0	0.0	0	0.00
junior/senior	0	0	0.0	0	0.00
Political Science	2	4	2.0	12	6.00
junior/senior	2	4	2.0	12	6.00
Psychology	1	3	3.0	9	9.00
junior/senior	1	3	3.0	9	9.00
Sociology	1	4	4.0	12	12.00
junior/senior	1	4	4.0	12	12.00
Total	7	21	3.0	61	8.71
Cumulative Total	21	66	3.1	286	13.62

Enrollment by Independent Study Class Sections Fall 2013

Fall 2013					
School/Subject/Class Level	# of Classes	# of Students	Avg Class Enrollment	Credit Hours	Avg Credit Hours Per Section
School of Arts and Letters					
Art	0	0	0.0	0	0.00
junior/senior	0	0	0.0	0	0.00
Foreign Languages	0	0	0.0	0	0.00
junior/senior	0	0	0.0	0	0.00
Language & Literature	2	2	0.0	6	0.00
junior/senior	2	2	0.0	6	0.00
Mass Communication	2	2	1.0	7	3.50
junior/senior	2	2	1.0	7	3.50
Music	0	0	0.0	0	0.00
junior/senior	0	0	0.0	0	0.00
Philosophy and Religion	4	5	1.3	15	3.75
junior/senior	4	5	1.3	15	3.75
Theatre Arts	1	1	1.0	3	3.00
junior/senior	1	1	1.0	3	3.00
Total	9	10	1.1	31	3.44
School of Business					
Management	0	0	0.0	0	0.00
junior/senior	0	0	0.0	0	0.00
Total	0	0	0.0	0	0.00

Enrollment by Independent Study Class Sections (Cont.) Fall 2013

Fall 2013					
School/Subject/Class Level	# of Classes	# of Students	Avg Class Enrollment	Credit Hours	Avg Credit Hours Per Section
School of Education					
Education	3	5	1.7	15	5.00
junior/senior	0	0	0.0	0	0.00
doctoral education	3	5	1.7	15	5.00
master of education	0	0	0.0	0	0.00
master of counseling	0	0	0.0	0	0.00
Exercise Science	0	0	0.0	0	0.00
junior/senior	0	0	0.0	0	0.00
Reading	0	0	0.0	0	0.00
master's	0	0	0.0	0	0.00
Total	3	5	1.7	15	5.00
School of Natural and Social Sciences					
Computer Science	0	0	0.0	0	0.00
junior/senior	0	0	0.0	0	0.00
History	0	0	0.0	0	0.00
junior/senior	0	0	0.0	0	0.00
Legal Studies	1	1	1.0	3	3.00
junior/senior	1	1	1.0	3	3.00
Political Science	0	0	0.0	0	0.00
junior/senior	0	0	0.0	0	0.00
Psychology	0	0	0.0	0	0.00
junior/senior	0	0	0.0	0	0.00
Total	1	1	1.0	3	3.00
Cumulative Total	13	16	1.2	49	3.77

Enrollment by Practicum Class Sections Fall 2013

Fall 2013					
School/Subject/Class Level	# of Classes	# of Students	Avg Class Enrollment	Credit Hours	Avg Credit Hours Per Section
School of Arts and Letters					
Theatre Arts	1	42	42.0	0	0.00
freshman/sophomore	1	42	42.0	0	0.00
School of Business					
Finance	2	6	3.0	18	9.00
junior/senior	1	5	5.0	15	15.00
master's	1	1	1.0	3	3.00
School of Education					
Education	8	49	6.1	147	18.38
master of counseling	8	49	6.1	147	18.38
School of Nurse Anesthesia					
Health Science	2	211	105.5	844	422.00
master's	2	211	105.5	844	422.00
School of Law					
Law	0	0	0.0	0	0.00
law	0	0	0.0	0	0.00
Total Undergrad	2	47	23.5	15	7.50
Total Master	11	260	23.6	991	90.09
Cumulative Total	13	308	23.7	1,009	77.62

Enrollment by Online Class Sections Fall 2013

Fall 2013					
School/Subject/Class Level	# of Classes	# of Students	Avg Class Enrollment	Credit Hours	Avg Credit Hours Per Section
School of Arts and Letters					
Art	0	0	0.0	0	0.00
freshman/sophomore	0	0	0.0	0	0.00
Humanities	2	38	19.0	114	57.00
freshman/sophomore	2	38	19.0	114	57.00
Language and Literature	6	82	13.7	246	41.00
freshman/sophomore	3	45	15.0	135	45.00
junior/senior	3	37	12.3	111	37.00
Fine Arts	0	0	0.0	0	0.00
freshman/sophomore	0	0	0.0	0	0.00
Philosophy and Religion	10	151	15.1	453	45.30
freshman/sophomore	8	127	15.9	381	47.63
junior/senior	2	24	12.0	72	36.00
Total Undergrad	18	271	15.1	813	45.17
School of Business					
Accounting	1	9	9.0	18	18.00
master's	0	0	0.0	0	0.00
doctoral	1	9	9.0	18	18.00
Economics	0	0	0.0	0	0.00
freshman/sophomore	0	0	0.0	0	0.00
Business Administration	1	31	31.0	93	93.00
freshman/sophomore	1	31	31.0	93	93.00
junior/senior	0	0	0.0	0	0.00
Management	3	80	26.7	189	63.00
junior/senior	1	29	29.0	87	87.00
master's	0	0	0.0	0	0.00
doctoral	2	51	25.5	102	51.00
Mgmt Info Systems	1	28	28.0	84	84.00
freshman/sophomore	0	0	0.0	0	0.00
junior/senior	1	28	28.0	84	84.00
Total Undergrad	3	88	29.3	264	88.00
Total Master	0	0	0.0	0	0.00
Total Doc	3	60	20.0	120	40.00
Total	6	148	24.7	384	64.00

Enrollment by Online Class Sections (Cont.) Fall 2013

Fall 2013					
School/Subject/Class Level	# of Classes	# of Students	Avg Class Enrollment	Credit Hours	Avg Credit Hours Per Section
School of Education					
Education	7	134	19.1	78	11.14
freshman/sophomore	3	106	35.3	0	0.00
master of education	4	28	7.0	78	19.50
Total Undergrad	3	106	35.3	0	0.00
Total Master	4	28	7.0	78	19.50
Total	7	134	19.1	78	11.14
School of Natural and Social Sciences					
Criminal Justice	1	10	10.0	30	30.00
junior/senior	1	10	10.0	30	30.00
History	2	26	13.0	78	39.00
freshman/sophomore	2	26	13.0	78	39.00
Natural Science	1	17	17.0	68	68.00
freshman/sophomore	1	17	17.0	68	68.00
Political Science	1	10	10.0	30	30.00
freshman/sophomore	1	10	10.0	30	30.00
Psychology	1	28	28.0	84	84.00
junior/senior	1	28	28.0	84	84.00
Sociology	0	0	0.0	0	0.00
junior/senior	0	0	0.0	0	0.00
Total	6	91	15.2	290	48.33
School of Nurse Anesthesia					
Health Science	3	52	17.3	188	62.67
master's	0	0	0.0	0	0.00
doctoral	3	52	17.3	188	62.67
Total	3	52	17.3	188	62.67
Cumulative Total	40	696	17.4	1,753	43.83

Enrollment by Learning Communities (LC) Class Sections Fall 2013

Fall 2013					
School/Subject/Class Level	# of Classes	# of Students	Avg Class Enrollment	Credit Hours	Avg Credit Hours Per Section
School of Arts and Letters					
Language and Literature	1	18	18.0	54	54.00
freshman/sophomore	1	18	18.0	54	54.00
junior/senior	0	0	0.0	0	0.00
Philosophy and Religion	1	10	10.0	30	30.00
freshman/sophomore	1	10	10.0	30	30.00
Speech	1	11	11.0	33	33.00
freshman/sophomore	1	11	11.0	33	33.00
Theatre Arts	2	24	12.0	72	36.00
freshman/sophomore	2	24	12.0	72	36.00
Total	5	63	12.6	189	37.80
School of Business					
Finance	0	0	0.0	0	0.00
freshman/sophomore	0	0	0.0	0	0.00
Total	0	0	0.0	0	0.00
School of Education					
Education	0	0	0.0	0	0.00
freshman/sophomore	0	0	0.0	0	0.00
Exercise and Sports Studies	0	0	0.0	0	0.00
freshman/sophomore	0	0	0.0	0	0.00
Total	0	0	0.0	0	0.00
General University					
ASE	0	0	0.0	0	0.00
freshman/sophomore	0	0	0.0	0	0.00
Language and Literature	0	0	0.0	0	0.00
freshman/sophomore	0	0	0.0	0	0.00
Mathematics	0	0	0.0	0	0.00
freshman/sophomore	0	0	0.0	0	0.00
Total	0	0	0.0	0	0.00

Enrollment by Learning Communities (LC) Class Sections (Cont.) Fall 2013

Fall 2013					
School/Subject/Class Level	# of Classes	# of Students	Avg Class Enrollment	Credit Hours	Avg Credit Hours Per Section
School of Natural and Social Sciences					
History	1	20	20.0	60	60.00
freshman/sophomore	1	20	20.0	60	60.00
Mathematics	0	0	0.0	0	0.00
freshman/sophomore	0	0	0.0	0	0.00
Natural Science	0	0	0.0	0	0.00
freshman/sophomore	0	0	0.0	0	0.00
Psychology	0	0	0.0	0	0.00
junior/senior	0	0	0.0	0	0.00
Total	1	20	20.0	60	60.00
School of Nurse Anesthesia					
Health Science	0	0	0.0	0	0.00
master's	0	0	0.0	0	0.00
doctoral	0	0	0.0	0	0.00
Total	0	0	0.0	0	0.00
Cumulative Total	6	83	13.8	249	41.50

Enrollment by Private Lessons Class Sections Fall 2013

Fall 2013					
School/Subject/Class Level	# of Classes	# of Students	Avg Class Enrollment	Credit Hours	Avg Credit Hours Per Section
School of Arts and Letters					
Music	69	87	1.3	147	2.13
freshman/sophomore	38	52	1.4	80	2.11
junior/senior	31	35	1.1	67	2.16
Theatre Arts	14	32	2.3	62	4.43
freshman/sophomore	4	14	3.5	24	6.00
junior/senior	10	18	1.8	38	3.80
Total	83	119	1.4	209	2.52

Enrollment by Secondary Education Class Sections Fall 2013

Fall 2013					
School/Subject/Class Level	# of Classes	# of Students	Avg Class Enrollment	Credit Hours	Avg Credit Hours Per Section
School of Education					
Education	0	0	0.0	0	0.00
freshman/sophomore	0	0	0.0	0	0.00
junior/senior	0	0	0.0	0	0.00
Reading	0	0	0.0	0	0.00
junior/senior	0	0	0.0	0	0.00
Total	0	0	0.0	0	0.00

Enrollment by School & Class Subject Spring 2014

Spring 2014					
* Based on 3-4 Hour Lecture Classes-Excludes Nurse Anesthesia, true labs, practicums, internships, independent study and conference classes					
School/Subject/Class Level	# of Classes	# of Students	Avg Class Enrollment	Credit Hours	Avg Credit Hours Per Section

University Total

Semester Undergraduate Total	498	6,867	13.8	20,958	42.08
Semester Master Total	40	455	11.4	1,365	34.13
Semester Doctoral Total	11	68	6.2	204	18.55
Cumulative for Term	549	7,390	13.5	22,527	41.03



Enrollment by School & Class Subject Spring 2014

Spring 2014					
* Based on 3-4 Hour Lecture Classes-Excludes Nurse Anesthesia, true labs, practicums, internships, independent study and conference classes					
School/Subject/Class Level	# of Classes	# of Students	Avg Class Enrollment	Credit Hours	Avg Credit Hours Per Section
School of Business					
Accounting	17	230	13.5	690	40.59
freshman/sophomore	5	136	27.2	408	81.60
junior/senior	9	87	9.7	261	29.00
master's	3	7	2.3	21	7.00
Business Administration	19	445	23.4	1,335	70.26
freshman/sophomore	8	274	34.3	822	102.75
junior/senior	10	155	15.5	465	46.50
master's	1	16	16.0	48	48.00
Economics	4	130	32.5	390	97.50
freshman/sophomore	3	122	40.7	366	122.00
junior/senior	0	0	0.0	0	0.00
master's	1	8	8.0	24	24.00
Finance	8	118	14.8	354	44.25
freshman/sophomore	1	36	36.0	108	108.00
junior/senior	7	82	11.7	246	35.14
master's	0	0	0.0	0	0.00
doc	0	0	0.0	0	0.00
Management	22	336	15.3	1,008	45.82
freshman/sophomore	0	0	0.0	0	0.00
junior/senior	18	293	16.3	879	48.83
master's	3	34	11.3	102	34.00
doc	1	9	9.0	27	27.00
Management & Computer Information Systems	4	79	19.8	237	59.25
freshman/sophomore	0	0	0.0	0	0.00
junior/senior	3	58	19.3	174	58.00
master's	1	21	21.0	63	63.00
Marketing	12	145	12.1	435	36.25
freshman/sophomore	0	0	0.0	0	0.00
junior/senior	12	145	12.1	435	36.25
master's	0	0	0.0	0	0.00
Total Undergrad	76	1,388	18.3	4,164	54.79
Total Master	9	86	9.6	258	28.67
Total Doc	1	9	9.0	27	27.00
Cumulative Total	86	1,483	17.2	4,449	51.73

Enrollment by School & Class Subject Spring 2014

Spring 2014					
* Based on 3-4 Hour Lecture Classes-Excludes Nurse Anesthesia, true labs, practicums, internships, independent study and conference classes					
School/Subject/Class Level	# of Classes	# of Students	Avg Class Enrollment	Credit Hours	Avg Credit Hours Per Section
School of Education					
Athletic Training	7	63	9.0	189	27.00
freshman/sophomore	2	36	18.0	108	54.00
junior/senior	5	27	5.4	81	16.20
Education	58	619	10.7	1,877	32.36
freshman/sophomore	2	22	11.0	66	33.00
junior/senior	18	180	10.0	560	31.11
master of counseling	17	254	14.9	762	44.82
master of education	11	104	9.5	312	28.36
doc education	10	59	5.9	177	17.70
Exercise and Sports Studies	14	172	12.3	516	36.86
freshman/sophomore	3	48	16.0	144	48.00
junior/senior	11	124	11.3	372	33.82
master's	0	0	0.0	0	0.00
Reading	6	61	10.2	199	33.17
freshman/sophomore	0	0	0.0	0	0.00
junior/senior	5	52	10.4	172	34.40
master's	1	9	9.0	27	27.00
Total Undergrad	46	489	10.6	1,503	32.67
Total Master	29	367	12.7	1,101	37.97
Total Doc	10	59	5.9	177	17.70
Cumulative Total	85	915	10.8	2,781	32.72

Enrollment by School & Class Subject Spring 2014

Spring 2014					
* Based on 3-4 Hour Lecture Classes-Excludes Nurse Anesthesia, true labs, practicums, internships, independent study and conference classes					
School/Subject/Class Level	# of Classes	# of Students	Avg Class Enrollment	Credit Hours	Avg Credit Hours Per Section
School of Arts and Letters					
Art	1	2	2.0	6	6.00
freshman/sophomore	1	2	2.0	6	6.00
junior/senior	0	0	0.0	0	0.00
Fine Arts	15	233	15.5	699	46.60
freshman/sophomore	15	233	15.5	699	46.60
junior/senior	0	0	0.0	0	0.00
Foreign Language	14	98	7.0	294	21.00
freshman/sophomore	11	76	6.9	228	20.73
junior/senior	3	22	7.3	66	22.00
Humanities	16	186	11.6	558	34.88
freshman/sophomore	16	186	11.6	558	34.88
junior/senior	0	0	0.0	0	0.00
Language and Literature	53	706	13.3	2,118	39.96
freshman/sophomore	40	583	14.6	1,749	43.73
junior/senior	13	123	9.5	369	28.38
master's	0	0	0.0	0	0.00
Mass Communication	13	107	8.2	329	25.31
freshman/sophomore	6	40	6.7	128	21.33
junior/senior	7	67	9.6	201	28.71
Music	5	31	6.2	93	18.60
freshman/sophomore	2	13	6.5	39	19.50
junior/senior	3	18	6.0	54	18.00
Philosophy and Religion	39	471	12.1	1,413	36.23
freshman/sophomore	32	426	13.3	1,278	39.94
junior/senior	7	45	6.4	135	19.29
Speech	12	248	20.7	744	62.00
freshman/sophomore	12	248	20.7	744	62.00
junior/senior	0	0	0.0	0	0.00
Theatre Arts	11	89	8.1	267	24.27
freshman/sophomore	5	50	10.0	150	30.00
junior/senior	6	39	6.5	117	19.50
Total Undergrad	179	2,171	12.1	6,521	36.43
Total Master	0	0	0.0	0	0.00
Cumulative Total	179	2,171	12.1	6,521	36.43

Enrollment by School & Class Subject Spring 2014

Spring 2014					
* Based on 3-4 Hour Lecture Classes-Excludes Nurse Anesthesia, true labs, practicums, internships, independent study and conference classes					
School/Subject/Class Level	# of Classes	# of Students	Avg Class Enrollment	Credit Hours	Avg Credit Hours Per Section
School of Natural and Social Sciences					
Biology	17	175	10.3	571	33.59
freshman/sophomore	7	119	17.0	357	51.00
junior/senior	10	56	5.6	214	21.40
Chemistry	6	82	13.7	246	41.00
freshman/sophomore	4	75	18.8	225	56.25
junior/senior	2	7	3.5	21	10.50
Computer Science	9	122	13.6	366	40.67
freshman/sophomore	7	102	14.6	306	43.71
junior/senior	2	20	10.0	60	30.00
Criminal Justice	10	210	21.0	630	63.00
freshman/sophomore	3	71	23.7	213	71.00
junior/senior	7	139	19.9	417	59.57
Geography	1	34	34.0	102	102.00
freshman/sophomore	1	34	34.0	102	102.00
junior/senior	0	0	0.0	0	0.00
History	28	391	14.0	1,173	41.89
freshman/sophomore	18	304	16.9	912	50.67
junior/senior	10	87	8.7	261	26.10
International Studies	0	0	0.0	0	0.00
freshman/sophomore	0	0	0.0	0	0.00
junior/senior	0	0	0.0	0	0.00
Legal Studies	9	64	7.1	192	21.33
freshman/sophomore	9	64	7.1	192	21.33
junior/senior	0	0	0.0	0	0.00
Mathematics	30	325	10.8	975	32.50
freshman/sophomore	25	295	11.8	885	35.40
junior/senior	3	28	9.3	84	28.00
master's	2	2	1.0	6	3.00
Natural Science	14	228	16.3	912	65.14
freshman/sophomore	14	228	16.3	912	65.14
junior/senior	0	0	0.0	0	0.00
Physics and Geology	2	18	9.0	72	36.00
freshman/sophomore	2	18	9.0	72	36.00
junior/senior	0	0	0.0	0	0.00
Political Science	14	167	11.9	501	35.79
freshman/sophomore	5	92	18.4	276	55.20
junior/senior	9	75	8.3	225	25.00
Psychology	18	380	21.1	1,161	64.50
freshman/sophomore	7	189	27.0	588	84.00
junior/senior	11	191	17.4	573	52.09
Sociology	11	229	20.8	687	62.45
freshman/sophomore	4	121	30.3	363	90.75
junior/senior	7	108	15.4	324	46.29
Total Undergrad	167	2,423	14.5	7,582	45.40
Total Master	2	2	1.0	6	3.00
Cumulative Total	169	2,425	14.3	7,588	44.90

Enrollment by School & Class Subject Spring 2014

Spring 2014					
* Based on 3-4 Hour Lecture Classes-Excludes Nurse Anesthesia, true labs, practicums, internships, independent study and conference classes					
School/Subject/Class Level	# of Classes	# of Students	Avg Class Enrollment	Credit Hours	Avg Credit Hours Per Section
General University					
Mathematics	13	195	15.0	585	45.00
freshman/sophomore	13	195	15.0	585	45.00
junior/senior	0	0	0.0	0	0.00
Reading	4	66	16.5	198	49.50
freshman/sophomore	4	66	16.5	198	49.50
junior/senior	0	0	0.0	0	0.00
Language and Literature	10	114	11.4	342	34.20
freshman/sophomore	10	114	0.0	342	0.00
junior/senior	0	0	0.0	0	0.00
Leadership	1	1	1.0	3	3.00
freshman/sophomore	0	0	0.0	0	0.00
junior/senior	1	1	0.0	3	0.00
Special Topics	2	20	10.0	60	30.00
freshman/sophomore	2	20	0.0	60	0.00
junior/senior	0	0	0.0	0	0.00
Total Undergrad	30	396	13.2	1,188	39.60

Enrollment in CORE Class Sections Spring 2014

Spring 2014					
School/Subject/Class Level	# of Classes	# of Students	Avg Class Enrollment	Credit Hours	Avg Credit Hours Per Section
School of Business					
Accounting CORE	6	149	24.8	447	74.50
freshman/sophomore	5	136	27.2	408	81.60
junior/senior	1	13	13.0	39	39.00
Business Admin CORE	10	173	17.3	519	51.90
freshman/sophomore	2	28	14.0	84	42.00
junior/senior	8	145	18.1	435	54.38
Economics CORE	1	43	43.0	129	129.00
freshman/sophomore	1	43	43.0	129	129.00
Finance CORE	2	36	18.0	108	54.00
junior/senior	2	36	18.0	108	54.00
Intl Business Admin CORE	0	0	0.0	0	0.00
junior/senior	0	0	0.0	0	0.00
Management CORE	8	124	15.5	372	46.50
junior/senior	8	124	15.5	372	46.50
Mgmt Info Systems CORE	3	58	19.3	174	58.00
junior/senior	3	58	19.3	174	58.00
Marketing CORE	6	82	13.7	246	41.00
junior/senior	6	82	13.7	246	41.00
Total	36	665	18.5	1,995	55.42
School of Education					
Education CORE	4	54	13.5	162	40.50
freshman/sophomore	0	0	0.0	0	0.00
junior/senior	0	0	0.0	0	0.00
master's	4	54	13.5	162	40.50
Reading CORE	0	0	0.0	0	0.00
junior/senior	0	0	0.0	0	0.00
Total School of Business	36	665	18.5	1,995	55.42
Total School of Education	4	54	13.5	162	40.50
Total	4	54	13.5	162	40.50
Cumulative Total	40	719	18.0	2,157	53.93

Enrollment in Weekend Class Sections Spring 2014

Spring 2014					
School/Subject/Class Level	# of Classes	# of Students	Avg Class Enrollment	Credit Hours	Avg Credit Hours Per Section
School of Arts and Letters					
Humanities	0	0	0.0	0	0.00
freshman/sophomore	0	0	0.0	0	0.00
Philosophy and Religion	0	0	0.0	0	0.00
freshman/sophomore	0	0	0.0	0	0.00
Theatre Arts	0	0	0.0	0	0.00
junior/senior	0	0	0.0	0	0.00
School of Education					
Education	7	72	10.3	216	30.86
master of counseling	2	28	14.0	84	42.00
master of education	2	20	10.0	60	30.00
doc education	3	24	8.0	72	24.00
Kinesiology	0	0	0.0	0	0.00
freshman/sophomore	0	0	0.0	0	0.00
Total	7	72	10.3	216	30.86
School of Natural and Social Sciences					
Criminal Justice	0	0	0.0	0	0.00
junior/senior	0	0	0.0	0	0.00
Mathematics	3	9	3.0	27	9.00
freshman/sophomore	1	7	7.0	21	21.00
master's	2	2	1.0	6	3.00
Natural Science	2	56	28.0	224	112.00
freshman/sophomore	2	56	28.0	224	112.00
Legal Studies	2	27	13.5	81	40.50
junior/senior	2	27	13.5	81	40.50
Psychology	0	0	0.0	0	0.00
junior/senior	0	0	0.0	0	0.00
Sociology	0	0	0.0	0	0.00
junior/senior	0	0	0.0	0	0.00
Total	7	92	13.1	332	47.43
School of Law					
Law	0	0	0.0	0	0.00
law	0	0	0.0	0	0.00

Enrollment in Weekend Class Sections (Cont.) Spring 2014

Spring 2014					
School/Subject/Class Level	# of Classes	# of Students	Avg Class Enrollment	Credit Hours	Avg Credit Hours Per Section
University General					
Women's Studies	0	0	0.0	0	0.00
junior/senior	0	0	0.0	0	0.00
Total Undergrad	5	90	18.0	326	65.20
Total Master	6	50	8.3	150	25.00
Total Doc	3	24	8.0	72	24.00
Total Law	0	0	0.0	0	0.00
Cumulative Total	14	164	11.7	548	39.14

Enrollment in Conference Class Sections Spring 2014

Spring 2014					
School/Subject/Class Level	# of Classes	# of Students	Avg Class Enrollment	Credit Hours	Avg Credit Hours Per Section

School of Arts and Letters

Language and Literature	2	2	1.0	6	3.00
freshman/sophomore	0	0	0.0	0	0.00
junior/senior	2	2	1.0	6	3.00
Mass Communication	2	3	1.5	9	4.50
freshman/sophomore	0	0	0.0	0	0.00
junior/senior	2	3	1.5	9	4.50
Philosophy and Religion	0	0	0.0	0	0.00
freshman/sophomore	0	0	0.0	0	0.00
junior/senior	0	0	0.0	0	0.00
Foreign Languages	1	1	1.0	3	3.00
freshman/sophomore	0	0	0.0	0	0.00
junior/senior	1	1	1.0	3	3.00
Total	5	6	1.2	18	3.60

School of Business

Accounting	0	0	0.0	0	0.00
junior/senior	0	0	0.0	0	0.00
Business Administration	0	0	0.0	0	0.00
master's	0	0	0.0	0	0.00
Computer Information Systems	0	0	0.0	0	0.00
junior/senior	0	0	0.0	0	0.00
Economics	1	1	1.0	3	3.00
master's	1	1	1.0	3	3.00
Finance	2	2	1.0	6	3.00
junior/senior	2	2	1.0	6	3.00
Management	0	0	0.0	0	0.00
junior/senior	0	0	0.0	0	0.00
master's	0	0	0.0	0	0.00
Mgmt Info Systems	0	0	0.0	0	0.00
junior/senior	0	0	0.0	0	0.00
master's	0	0	0.0	0	0.00
Total	3	3	1.0	9	3.00

Enrollment in Conference Class Sections (Cont.) Spring 2014

Spring 2014					
School/Subject/Class Level	# of Classes	# of Students	Avg Class Enrollment	Credit Hours	Avg Credit Hours Per Section
School of Education					
Athletic Training	1	1	1.0	3	3.00
freshman/sophomore	1	1	1.0	3	3.00
Education	11	15	1.4	45	4.09
junior/senior	4	8	2.0	24	6.00
master's of education	1	1	1.0	3	3.00
master of counseling	3	3	1.0	9	3.00
doc education	3	3	1.0	9	3.00
Exercise Science	1	1	1.0	3	3.00
junior/senior	1	1	1.0	3	3.00
Kinesiology	0	0	0.0	0	0.00
junior/senior	0	0	0.0	0	0.00
Reading	1	1	1.0	4	4.00
junior/senior	1	1	0.0	4	0.00
master's	0	0	0.0	0	0.00
Total	14	18	1.3	55	3.93
School of Natural and Social Sciences					
Biology	0	0	0.0	0	0.00
junior/senior	0	0	0.0	0	0.00
Chemistry	0	0	0.0	0	0.00
junior/senior	0	0	0.0	0	0.00
Criminal Justice	1	2	2.0	6	6.00
junior/senior	1	2	2.0	6	6.00
Computer Science	2	2	1.0	6	3.00
freshman/sophomore	0	0	0.0	0	0.00
junior/senior	2	2	1.0	6	3.00
History	1	2	2.0	6	6.00
junior/senior	1	2	2.0	6	6.00
Mathematics	0	0	0.0	0	0.00
junior/senior	0	0	0.0	0	0.00
Political Science	0	0	0.0	0	0.00
junior/senior	0	0	0.0	0	0.00
Sociology	0	0	0.0	0	0.00
junior/senior	0	0	0.0	0	0.00
Total	4	6	1.5	18	4.50
Cumulative Total	26	33	1.3	100	3.85

Enrollment in Internship Class Sections Spring 2014

Spring 2014					
School/Subject/Class Level	# of Classes	# of Students	Avg Class Enrollment	Credit Hours	Avg Credit Hours Per Section
School of Arts and Letters					
Language and Literature	1	2	2.0	6	6.00
junior/senior	1	2	2.0	6	6.00
Mass Communication	1	6	6.0	18	18.00
junior/senior	1	6	6.0	18	18.00
Philosophy and Religion	0	0	0.0	0	0.00
freshman/sophomore	0	0	0.0	0	0.00
junior/senior	0	0	0.0	0	0.00
Total	2	8	4.0	24	12.00
School of Business					
Accounting	0	0	0.0	0	0.00
junior/senior	0	0	0.0	0	0.00
Business Administration	1	1	1.0	3	3.00
junior/senior	0	0	0.0	0	0.00
master's	1	1	1.0	3	3.00
Finance	0	0	0.0	0	0.00
junior/senior	0	0	0.0	0	0.00
Management	1	1	1.0	3	3.00
junior/senior	1	1	1.0	3	3.00
Marketing	1	1	1.0	3	3.00
junior/senior	1	1	1.0	3	3.00
Total	3	3	1.0	9	3.00
School of Education					
Education	2	3	1.5	18	9.00
junior/senior	2	3	1.5	18	9.00
master of education	0	0	0.0	0	0.00
Total	2	3	1.5	18	9.00

Enrollment in Internship Class Sections (Cont.) Spring 2014

Spring 2014					
School/Subject/Class Level	# of Classes	# of Students	Avg Class Enrollment	Credit Hours	Avg Credit Hours Per Section
School of Natural and Social Sciences					
Chemistry	1	1	1.0	2	2.00
junior/senior	1	1	1.0	2	2.00
Criminal Justice	1	10	10.0	30	30.00
junior/senior	1	10	10.0	30	30.00
Computer Science	0	0	0.0	0	0.00
junior/senior	0	0	0.0	0	0.00
History	1	3	3.0	9	9.00
junior/senior	1	3	3.0	9	9.00
Legal Studies	0	0	0.0	0	0.00
junior/senior	0	0	0.0	0	0.00
Political Science	2	4	2.0	12	6.00
junior/senior	2	4	2.0	12	6.00
Psychology	2	5	2.5	15	7.50
junior/senior	2	5	2.5	15	7.50
Sociology	2	6	3.0	18	9.00
junior/senior	2	6	3.0	18	9.00
Total	9	29	3.2	86	9.56
School of Law					
Law	0	0	0.0	0	0.00
law	0	0	0.0	0	0.00
Cumulative Total	16	43	2.7	137	8.56

Enrollment by Independent Study Class Sections Spring 2014

Spring 2014					
School/Subject/Class Level	# of Classes	# of Students	Avg Class Enrollment	Credit Hours	Avg Credit Hours Per Section
School of Arts and Letters					
Art	1	2	2.0	6	6.00
junior/senior	1	2	2.0	6	6.00
Foreign Languages	2	2	1.0	6	3.00
junior/senior	2	2	1.0	6	3.00
Language and Literature	0	0	0.0	0	0.00
junior/senior	0	0	0.0	0	0.00
Mass Communication	3	3	1.0	6	2.00
junior/senior	3	3	1.0	6	2.00
Music	0	0	0.0	0	0.00
junior/senior	0	0	0.0	0	0.00
Philosophy and Religion	0	0	0.0	0	0.00
junior/senior	0	0	0.0	0	0.00
Theatre Arts	0	0	0.0	0	0.00
junior/senior	0	0	0.0	0	0.00
Total	6	7	1.2	18	3.00

School of Education					
Athletic Training	1	1	1.0	1	1.00
junior/senior	1	1	1.0	1	1.00
Education	2	2	1.0	6	3.00
junior/senior	0	0	0.0	0	0.00
master of education	1	1	0.0	3	0.00
master of counseling	1	1	1.0	3	3.00
Exercise Science	1	1	1.0	1	1.00
freshman/sophomore	1	1	1.0	1	1.00
junior/senior	0	0	0.0	0	0.00
Kinesiology	0	0	0.0	0	0.00
junior/senior	0	0	0.0	0	0.00
Total	4	4	1.0	8	2.00

Enrollment by Independent Study Class Sections (Cont.) Spring 2014

Spring 2014					
School/Subject/Class Level	# of Classes	# of Students	Avg Class Enrollment	Credit Hours	Avg Credit Hours Per Section
School of Natural and Social Sciences					
Criminal Justice	0	0	0.0	0	0.00
junior/senior	0	0	0.0	0	0.00
Geography	0	0	0.0	0	0.00
junior/senior	0	0	0.0	0	0.00
Legal Studies	0	0	0.0	0	0.00
junior/senior	0	0	0.0	0	0.00
Mathematics	0	0	0.0	0	0.00
junior/senior	0	0	0.0	0	0.00
Political Science	0	0	0.0	0	0.00
junior/senior	0	0	0.0	0	0.00
Sociology	1	1	1.0	1	1.00
freshman/sophomore	0	0	0.0	0	0.00
junior/senior	1	1	1.0	1	1.00
Total	1	1	1.0	1	1.00
School of Law					
Law	0	0	0.0	0	0.00
law	0	0	0.0	0	0.00
Cumulative Total	11	12	1.1	27	2.45

Enrollment by Practicum Class Sections Spring 2014

Spring 2014					
School/Subject/Class Level	# of Classes	# of Students	Avg Class Enrollment	Credit Hours	Avg Credit Hours Per Section
School of Arts and Letters					
Theatre Arts	1	35	35.0	0	0.00
freshman/sophomore	1	35	35.0	0	0.00
School of Business					
Finance	0	0	0.0	0	0.00
junior/senior	0	0	0.0	0	0.00
master's	0	0	0.0	0	0.00
School of Education					
Athletic Training	0	0	0.0	0	0.00
freshman/sophomore	0	0	0.0	0	0.00
Education	5	41	8.2	123	24.60
master of counseling	5	41	8.2	123	24.60
Kinesiology	0	0	0.0	0	0.00
freshman/sophomore	0	0	0.0	0	0.00
School of Nurse Anesthesia					
Health Science	2	103	51.5	412	206.00
master's	2	103	51.5	412	206.00
School of Law					
Law	0	0	0.0	0	0.00
law	0	0	0.0	0	0.00
Total Undergrad	1	35	35.0	0	0.00
Total Master	7	144	20.6	535	76.43
Total Law	0	0	0.0	0	0.00
Cumulative Total	8	179	22.4	535	66.88

Enrollment by Online Class Sections Spring 2014

Spring 2014					
School/Subject/Class Level	# of Classes	# of Students	Avg Class Enrollment	Credit Hours	Avg Credit Hours Per Section
School of Arts and Letters					
Humanities	2	34	17.0	102	51.00
freshman/sophomore	2	34	17.0	102	51.00
Language and Literature	6	75	12.5	225	37.50
freshman/sophomore	3	39	13.0	117	39.00
junior/senior	3	36	12.0	108	36.00
Philosophy and Religion	10	136	13.6	408	40.80
freshman/sophomore	7	120	17.1	360	51.43
junior/senior	3	16	5.3	48	16.00
Total	18	245	13.6	735	40.83

School of Business					
Business Administration	1	7	7.0	0	0.00
junior/senior	1	7	7.0	0	0.00
Business Administration	1	30	30.0	90	90.00
freshman/sophomore	1	30	30.0	90	90.00
Economics	1	31	0.0	93	0.00
freshman/sophomore	1	31	0.0	93	0.00
Finance	0	0	0.0	0	0.00
master's	0	0	0.0	0	0.00
doc	0	0	0.0	0	0.00
Management	1	9	9.0	27	27.00
junior/senior	0	0	0.0	0	0.00
doc	1	9	9.0	27	27.00
Mgmt Info Systems	1	25	25.0	75	75.00
freshman/sophomore	0	0	0.0	0	0.00
junior/senior	1	25	25.0	75	75.00
master's	0	0	0.0	0	0.00
Marketing	0	0	0.0	0	0.00
junior/senior	0	0	0.0	0	0.00
Total	5	102	20.4	285	57.00

Enrollment by Online Class Sections (Cont.) Spring 2014

Spring 2014					
School/Subject/Class Level	# of Classes	# of Students	Avg Class Enrollment	Credit Hours	Avg Credit Hours Per Section
School of Education					
Education	8	102	12.8	168	21.00
freshman/sophomore	2	46	23.0	0	0.00
master of education	5	51	10.2	153	30.60
master of counseling	1	5	5.0	15	15.00
Total	8	102	12.8	168	21.00
School of Natural and Social Sciences					
History	1	21	21.0	63	63.00
freshman/sophomore	1	21	21.0	63	63.00
Political Science	1	17	17.0	51	51.00
freshman/sophomore	1	17	17.0	51	51.00
Psychology	2	40	20.0	120	60.00
junior/senior	2	40	20.0	120	60.00
Total	4	78	19.5	234	58.50
School of Nurse Anesthesia					
Health Science	4	75	18.8	294	73.50
doctoral	4	75	18.8	294	73.50
Cumulative Total	39	602	15.4	1,716	44.00

Enrollment by Learning Communities (LC) Class Sections Spring 2014

Spring 2014					
School/Subject/Class Level	# of Classes	# of Students	Avg Class Enrollment	Credit Hours	Avg Credit Hours Per Section
School of Arts and Letters					
Language and Literature	1	14	14.0	42	42.00
freshman/sophomore	1	14	14.0	42	42.00
Speech	1	14	14.0	42	42.00
freshman/sophomore	1	14	14.0	42	42.00
School of Education					
Education	0	0	0.0	0	0.00
freshman/sophomore	0	0	0.0	0	0.00
junior/senior	0	0	0.0	0	0.00
School of Natural and Social Sciences					
History	0	0	0.0	0	0.00
freshman/sophomore	0	0	0.0	0	0.00
General University					
Mathematics	0	0	0.0	0	0.00
freshman/sophomore	0	0	0.0	0	0.00
Cumulative Total	2	28	14.0	84	42.00

Enrollment by Private Lessons Class Sections Spring 2014

Spring 2014					
School/Subject/Class Level	# of Classes	# of Students	Avg Class Enrollment	Credit Hours	Avg Credit Hours Per Section
School of Arts and Letters					
Music	75	124	1.7	211	2.81
freshman/sophomore	41	77	1.9	117	2.85
junior/senior	34	47	1.4	94	2.76
Total	75	124	1.7	211	2.81

Enrollment by Secondary Education Class Sections Spring 2014

Spring 2014					
School/Subject/Class Level	# of Classes	# of Students	Avg Class Enrollment	Credit Hours	Avg Credit Hours Per Section
School of Education					
Education	2	7	3.5	42	21.00
freshman/sophomore	0	0	0.0	0	0.00
junior/senior	2	7	3.5	42	21.00
Reading	1	18	18.0	54	54.00
junior/senior	1	18	18.0	54	54.00
Total	3	25	8.3	96	32.00